



MS9500 SERIES **VOYAGER**[®] PRODUCT GUIDE

Single Line, Hand-Held,
1D, High-Density 1D,
PDF-417 2D and Wireless
Laser Bar Code Scanners

Metrologic Instruments, Inc. is a global supplier of choice for data capture and collection hardware, optical solutions, and image processing software. Metrologic has been delivering innovative, quality products that are cost effective, reliable and supported by the highest level of personal service for nearly 40 years. Metrologic products are sold worldwide through Metrologic's sales, service and distribution offices located in The Americas, EMEA and Asia/Pacific. Metrologic provides its customers not only with a great deal, but a great deal more. For more information please call 1-800-667-8400 or visit www.metrologic.com.

**Sales support and technical assistance
are available worldwide.**

View Metrologic data sheets, user/programming guides, trade show schedules, and much more at:

www.metrologic.com

Specifications subject to change without notice.
Printed U.S.A., Copyright June 2006
Metrologic, All rights reserved.



www.metrologic.com
ISO 9001:2000

Metrologic Instruments, Inc. | **Worldwide Headquarters**
90 Coles Road | Blackwood, NJ 08012-4683 | info@metrologic.com
Telephone 856-228-8100 | Fax 856-228-6673

Asian Headquarters Tel. 65.6842.7155 info@sg.metrologic.com	European Headquarters Tel. 49.89.89019.0 info@eu.metrologic.com	The Americas Headquarters Tel. 1.800.ID.METRO info@us.metrologic.com
--	--	---



D59500

VOYAGER SERIES

9524 - 9544



9535



9521 - 9541



9520 - 9540



Contents

About Voyager® Scanners	1
Voyager Selection Chart	2
MS9520 Voyager	3
MS9540 VoyagerCG®	3
MS9535 VoyagerBT™	4
MS9524 VoyagerPDF™	5
MS9544 VoyagerPDF™	5
MS9521 VoyagerHD™	6
MS9541 VoyagerHD™	6
Options and Accessories	7
MetroSet®2 Software Utility	8
Specifications	9-10



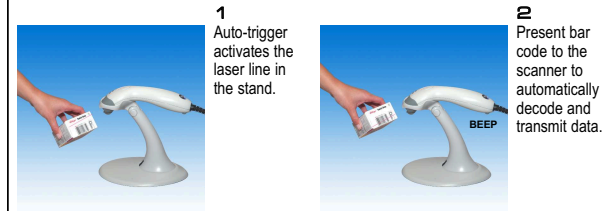
Voyager® Selection Chart

Hand-held or hands-free. Corded or wireless. Small, large or PDF417 bar code. There is a Voyager series scanner perfectly suited for any retail, light warehouse or healthcare application. It's no wonder so many companies have made the switch to the affordably-priced Voyager, which features CodeGate® technology, automatic in-stand scanning, an all-inclusive kit and a bumper-to-cable warranty.

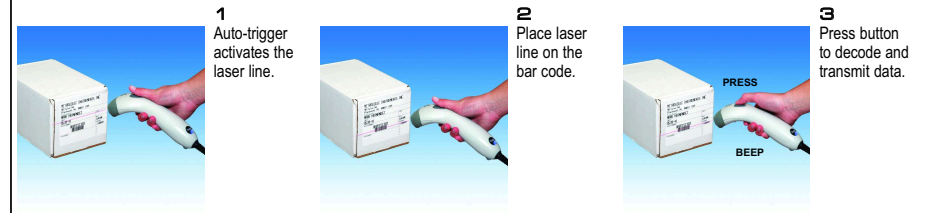
- ALL VOYAGER MOD -
- ✓ Flash ROM Upgrades
 - ✓ Custom Edit Bar Codes
 - ✓ Sunrise 2005 Compliant
 - ✓ Support for Common Interfaces
 - ✓ Complete Kits Standard
 - ✓ Auto Activation Mode (hands-free)
 - ✓ User-replaceable Detachable Cables
 - ✓ Decodes all standard 1D, RSS-14, RSS-Limited and RSS-Expanded bar code

Modes of Operation

In Stand, Auto Trigger - CodeGate and Non-CodeGate Models



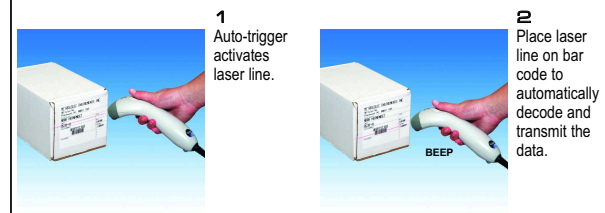
Out-of-Stand - CodeGate Models



Out-of-Stand, Manual Activation - CodeGate Models



Out-of-Stand, Auto Trigger - Models without CodeGate and Models with CodeGate Feature Deactivation



<p>MS9520 Voyager</p>	<p>MS9540 VoyagerCG[®] with CodeGate</p>	STANDARD	Page 3
<p>MS9535 VoyagerBT[™] with CodeGate</p>		WIRELESS	Page 4
<p>MS9524 VoyagerPDF[™]</p>	<p>MS9544 VoyagerPDF[™] with CodeGate</p>	2D BAR CODES	Page 5
<p>MS9521 VoyagerHD[™]</p>	<p>MS9541 VoyagerHD[™] with CodeGate</p>	HIGH DENSITY BAR CODES	Page 6

MS9520 Voyager® & MS9540 Voyager CG®

Voyager

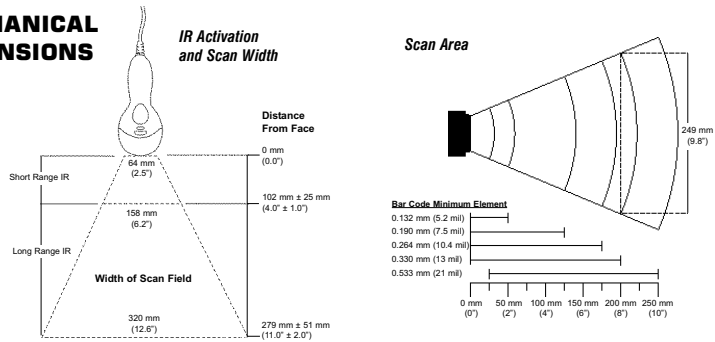
The Metrologic Voyager and VoyagerCG hand-held, single-line scanners have united form with function to become the industry benchmark for value and performance. These sleek scanners feature a patented automatic infrared activation and decode all standard 1D bar codes, including RSS codes.

VoyagerCG also includes Metrologic's patented CodeGate technology which easily completes data transmission with the push of a single button.

For presentation scanning, Voyager and VoyagerCG come with a stand and in-stand-auto-detection technology.



MECHANICAL DIMENSIONS



features

- Automatic Trigger
- CodeGate data transmission
- 650-nanometer laser
- FlashROM
- Parsing (data editing)

benefits

Use scanner as either a hand-held device or a fixed presentation scanner when mounted in the stand

Ideal for menu-scanning applications and when combined with the Auto-Trigger, VoyagerCG is the most intuitive bar code scanning system in the industry

Equipped with a high-visibility laser allowing the user to place the line on bar code

Update firmware from any PC via MetroSet² software provided free from Metrologic

Bar code data can be formatted to meet the requirements of host system

MS9535 Voyager BT™

Voyager

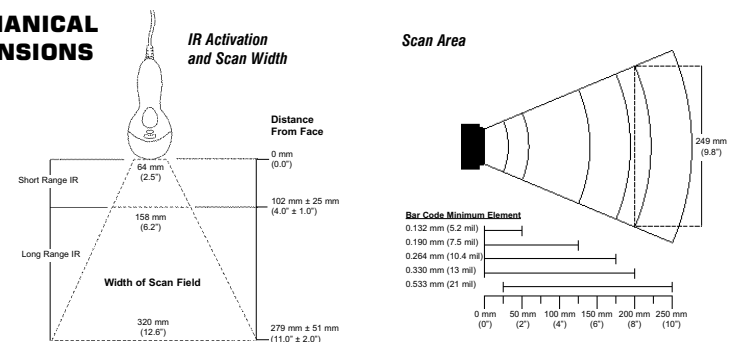
The Metrologic VoyagerBT and VoyagerBT-5M combine the freedom of Bluetooth technology with many of the outstanding features found in all Voyager series hand-held, single-line scanners – the industry benchmark for value and performance.

In addition to automatic infrared activation for bar code detection, both models come equipped with Metrologic's patented CodeGate and RangeGate technology. RangeGate enables both models to scan hundreds of bar codes when out of range of a host system (VoyagerBT – 250, VoyagerBT-5M – 2400 bar codes).

To conserve valuable counter space, the scanner cradle mounts to any wall.



MECHANICAL DIMENSIONS



features

- Bluetooth technology
- Two-way communication
- Wall-Mountable Cable
- CodeGate data transmission
- RangeGate

benefits

Bluetooth outlines a specification, enabling a diverse range of devices to communicate

User receives audible and visual confirmation of each scan

Conserves valuable counter space

Ideal for menu scanning applications and when combined with the Auto-Trigger, VoyagerBT is the most intuitive bar code scanning system in the industry

Scans 8KB of bar codes while out of range and then communicates with the host once connectivity is re-established

MS9524 Voyager PDF™ & MS9544 Voyager PDF™

Voyager

The Metrologic Voyager PDF™ (models MS9524 & MS9544) combines the ability to decode PDF bar codes with many of the outstanding features found in all Voyager series hand-held, single-line scanners – the industry benchmark for value and performance.

Both models decode the following: 1D, PDF417, PDF417 truncated, micro PDF, macro PDF and RSS-14 composite bar codes.

In addition to automatic infrared activation for bar code detection, Voyager PDF™ (model MS9544) also comes equipped with Metrologic's patented CodeGate™ technology which completes data transmission with the push of a single button.

Voyager PDF™ models come with a stand and in-stand auto-detection technology for presentation scanning.

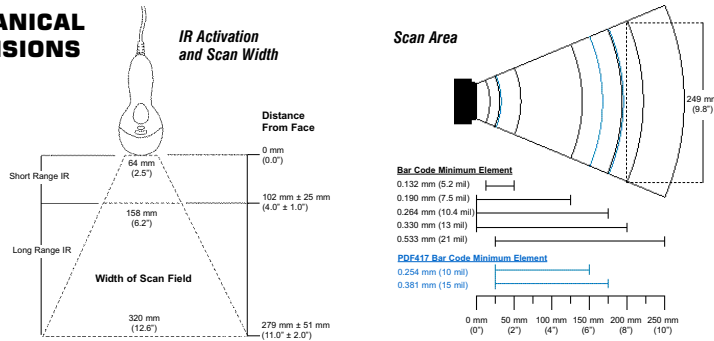


MS9524



MS9544

MECHANICAL DIMENSIONS



features	benefits
• Decodes PDF417	Ability to decode PDF417, PDF417 truncated and micro PDF417
• Automatic trigger	Allows the scanner to be used as both a hand-held device and a fixed presentation scanner when mounted in the stand
• CodeGate data transmission	Ideal for menu scanning applications and when combined with the Auto-Trigger, Voyager PDF™ is the most intuitive bar code scanning system in the industry
• High speed scanning	
• FlashROM	Maximizes productivity by minimizing operation time

Use an ordinary personal computer to update scanner's firmware

MS9521 Voyager HD™ & MS9541 Voyager HD™

Voyager

The Metrologic Voyager HD™ high-density, hand-held, single-line scanner comes equipped with many of the outstanding features found in all Voyager models - the industry benchmark for value and performance.

This sleek scanner features patented automatic infrared activation and decodes all standard 1D bar codes, including high-density codes.

Voyager HD™ (model MS9541) also includes Metrologic's patented CodeGate™ technology which easily completes data transmission with the push of a single button.

For presentation scanning, Voyager HD™ comes with a stand and



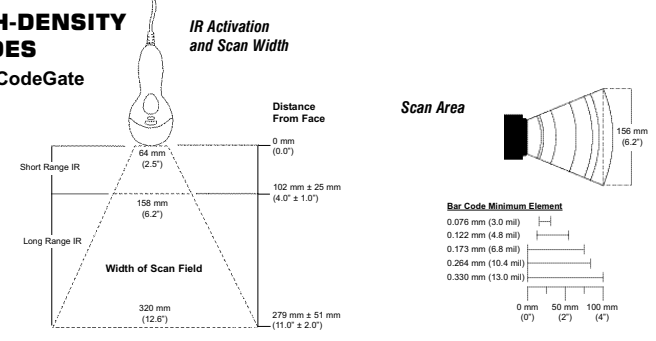
MS9521



MS9541

SCANS HIGH-DENSITY 1D BAR CODES with or without CodeGate

Sunrise 2005 Compliant



features	benefits
• Automatic trigger	Use as either a hand-held device or a fixed presentation scanner when mounted in stand
• CodeGate data transmission	Ideal for menu-scanning applications and when combined with automatic trigger, Voyager HD™ is the most intuitive bar code scanning system in the industry
• Higher density code scanning	Optimizes decoding higher density codes on small labels and tags
• FlashROM	Update firmware from any PC via MetroSet™2 software provided free from Metrologic
• Parsing (data editing)	Bar code data can be formatted to meet the requirements of host system

MS9500 Series Voyager® Options and Accessories



Voyagers

Available in two standard colors: Smoke White and Onyx Black.

Also available in a variety of other colors with minimum quantity purchase.



Optional Wall Mount
shown with MS9540 VoyagerCG (scanner sold separately)

Optional VoyagerBT Presentation Stand
shown with MS9535 VoyagerBT (scanner sold separately)



Standard Stand-Mounting Hardware
Included in all MS9500 Series Kits - except MS9535 shown with MS9541 VoyagerHD



Optional Charger-Only Cradle
for applications where scanner communicates directly with another Bluetooth device

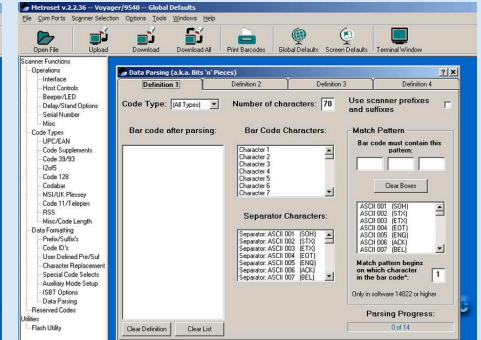
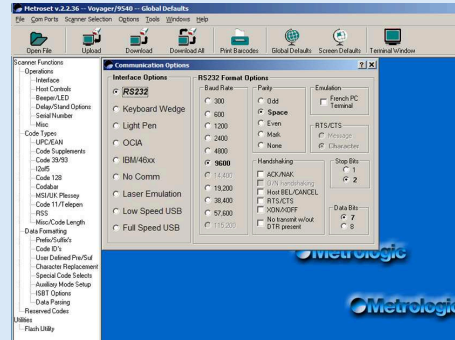
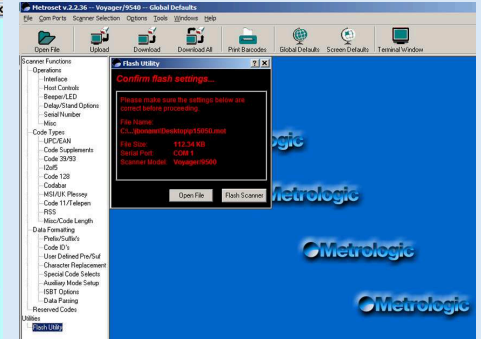
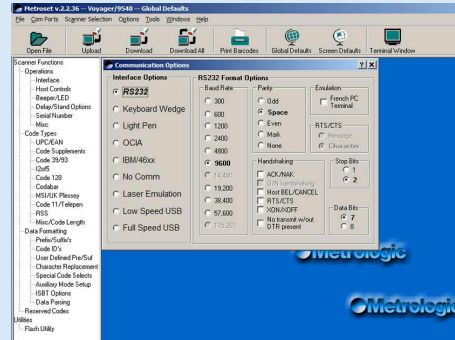
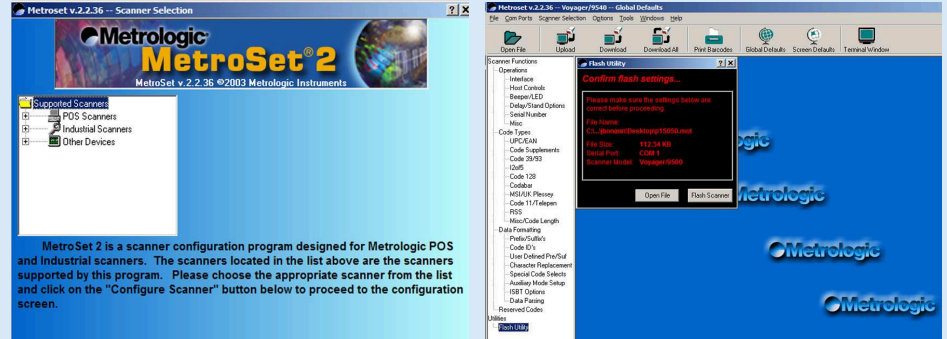


MetroSet®2 Software Utility

MetroSet®2 is a graphical programming utility included in the Voyager series that provides users with a Windows-based tool for programming, formatting, data parsing and performing flash upgrades.

Simply select the scanner type from the list provided and begin programming. Users can easily create custom configurations by uploading current settings. This file can then be saved and used to program multiple scanners. This ensures all scanners have the same configuration.

Also included in MetroSet®2 is a Flash Utility that allows users to upgrade firmware by simply selecting the file and clicking the "Flash Scanner" button. Customers can receive new firmware from Metrologic's Technical Support Department by contacting their local Metrologic representative.



The Voyager® Series of Scanners

Standard Voyager Colors



Available in a variety of other colors with minimum quantity purchase



MS9520 **Voyager®** & MS9540 **VoyagerCG™**
SCANS 1D BAR CODES
 - with or without CodeGate

MS9521 & MS9541 **VoyagerHD™**
SCANS HIGH DENSITY 1D BAR CODES
 - with or without CodeGate

MS9524 & MS9544 **VoyagerPDF™**
SCANS 1D AND PDF417 (2D) BAR CODES
 - with or without CodeGate

MS9535 **VoyagerBT™**
**SCANS 1D BAR CODES, WIRELESS
 BLUETOOTH TECHNOLOGY** - with CodeGate

OPERATIONAL				
Light Source	Visible Laser Diode 650 nm ± 10 nm	Visible Laser Diode 650 nm ± 10 nm	Visible Laser Diode 650 nm ± 10 nm	Visible Laser Diode 650 nm ± 10 nm
Laser Power	0.96 mW (peak)	0.96 mW (peak)	0.96 mW (peak)	0.96 mW (peak)
Depth of Scan Field (program)	0 mm - 203 mm (0° - 8°) for 0.33 mm (13 mil) bar codes	15 mm - 35 mm (0.6° - 1.4°) for 0.076 mm (3 mil) bar codes	0 mm - 203 mm (0° - 8°) for 0.33 mm (13 mil) bar codes	0 mm - 203 mm (0° - 8°) for 0.33 mm (13 mil) bar codes
Width of Scan Field	64 mm (2.5") @ face; 249 mm (9.8") @ 203 mm (8.0")	64 mm (2.5") @ face; 157 mm (6.2") @ 102 mm (4.0")	64 mm (2.5") @ face; 249 mm (9.8") @ 203 mm (8.0")	64 mm (2.5") @ face; 249 mm (9.8") @ 203 mm (8.0")
Scan Speed	72 ± 2 scan lines per second	72 ± 2 scan lines per second	180 ± 10 scan lines per second	72 ± 2 scan lines per second
Scan Pattern	Single scan line	Single scan line	Single scan line	Single scan line
Minimum Bar Width	0.127 mm (5.0 mil)	0.076 mm (3.0 mil)	0.127 mm (5.0 mil)	0.127 mm (5.0 mil)
Decode Capability	Autodiscriminates all standard 1D bar codes, including RSS, for other symbologies call Metrologic	Autodiscriminates all standard 1D bar codes, including RSS, for other symbologies call Metrologic	Autodiscriminates all standard 1D and 2D bar codes, including RSS-14, PDF417, truncated PDF417, micro PDF and macro PDF; for other symbologies call Metrologic	Autodiscriminates all standard 1D bar codes, including RSS, for other symbologies call Metrologic
System Interfaces	PC Keyboard Wedge, RS232, OCIA, Light Pen Emulation, Non-decode Emulation, IBM 468X/469X, Stand Alone Keyboard, USB (low speed and full speed)	PC Keyboard Wedge, RS232, OCIA, Light Pen Emulation, Non-decode Emulation, IBM 468X/469X, Stand Alone Keyboard, USB (low speed and full speed)	PC Keyboard Wedge, RS232, OCIA, Light Pen Emulation, Non-decode Emulation, IBM 468X/469X, Stand Alone Keyboard, USB (low speed and full speed)	PC Keyboard Wedge, RS232, Light Pen Emulation, Stand Alone Keyboard, USB (low speed and full speed)
Print Contrast	35% minimum reflectance difference	35% minimum reflectance difference	35% minimum reflectance difference	35% minimum reflectance difference
Number Characters	Up to 80 data characters	Up to 80 data characters	Up to 80 data characters on 1D; 1850 text characters on PDF417	Up to 80 data characters
Roll, Pitch, Yaw	42°, 68°, 52°	42°, 68°, 52°	42°, 68°, 52°	42°, 68°, 52°
Beeper Operation	7 tones or no beep	7 tones or no beep	13 tones or no beep	7 tones or no beep
Indicators (LED)	Green=laser on, ready to scan; yellow=auto trigger mode active; red=good read	Green=laser on, ready to scan; yellow=auto trigger mode active; red=good read	Blue=laser on, ready to scan; yellow=auto trigger mode active; white=good read	Blue=laser on, ready to scan; yellow=auto trigger mode active; white=good read
Profile Support	N/A	N/A	N/A	Serial Port Profile (SPP)
Bluetooth Version	N/A	N/A	N/A	v1.2 compliant
Height	198 mm (7.8")	198 mm (7.8")	198 mm (7.8")	Scanner: 198 mm (7.8"); base: 204 mm (8.0")
Depth	40 mm (1.6")	40 mm (1.6")	40 mm (1.6")	Scanner: 40 mm (1.6"); base: 61 mm (2.4")
Width	Handle - 45 mm (1.8"); Head - 78 mm (3.1")	Handle - 45 mm (1.8"); Head - 78 mm (3.1")	Handle - 45 mm (1.8"); Head - 78 mm (3.1")	Handle: 45 mm (1.8"); head: 78 mm (3.1"); base: 107 mm (4.2")
Weight	149 g (5.25 oz)	149 g (5.25 oz)	149 g (5.25 oz)	Scanner (with battery) 199 g (7.02 oz); base: 225 g (7.94 oz)
Termination	10 pin modular RJ45	10 pin modular RJ45	10 pin modular RJ45	10 pin modular RJ45
Cable	Standard 2.7 m (9') coiled; optional 2.1 m (7') straight	Standard 2.7 m (9') coiled; optional 2.1 m (7') straight	Standard 2.7 m (9') coiled; optional 2.1 m (7') straight	2.1 m (7') straight
Input Voltage	5 VDC ± 0.25 V	5 VDC ± 0.25 V	5.2 VDC ± 0.25 V	Base: 5.2 VDC ± 0.25 V
Power - Operating	500 mW	500 mW	1500 mW	Base: 0.6 W (typical); 1.4 W (max)
Power - Standby	110 mW	110 mW	750 mW	Base: 0.6 W
Current - Operating	100 mA typical @ 5 VDC	100 mA typical @ 5 VDC	300 mA typical @ 5.25 VDC	Scanner: 230 mA (max) @ 5 VDC; base: 65 mA (max) @ 5 VDC
Current - Standby	22 mA typical @ 5 VDC	22 mA typical @ 5 VDC	100 mA typical @ 5.25 VDC	Scanner: 30 mA typical @ 5 VDC
DC Transformers	Class 2; 5.2 VDC @ 650 mA	Class 2; 5.2 VDC @ 650 mA	Class 2; 5.2 VDC @ 650 mA	Scanner: none; base: Class 2; 5.2 VDC @ 2 A
Laser Class	Laser Class 1 In accordance with IEC 60825-1:1993+A1:1997+A2:2001 and EN 60825-1:1994+A11:1996+A2:2001	Laser Class 1 In accordance with IEC 60825-1:1993+A1:1997+A2:2001 and EN 60825-1:1994+A11:1996+A2:2001	Laser Class 1 In accordance with IEC 60825-1:1993+A1:1997+A2:2001 and EN 60825-1:1994+A11:1996+A2:2001	Laser Class 1 In accordance with IEC 60825-1:1993+A1:1997+A2:2001 and EN 60825-1:1994+A11:1996+A2:2001
EMC	FCC, ICES-003 & EN55022 Class B	FCC, ICES-003 & EN55022 Class B	FCC, ICES-003 & EN55022 Class B	FCC, ICES-003 & EN55022 Class B
Current Charging	N/A	N/A	N/A	2 A
Recharge Time	N/A	N/A	N/A	2.5 hours
Battery Capacity	N/A	N/A	N/A	12,000 scans (max)
Radio Range	N/A	N/A	N/A	10 m (33')
Frequency	N/A	N/A	N/A	2.4 - 2.48 GHz (frequency hopping)
Operating Temperature	0°C to 40°C (32°F to 104°F)	0°C to 40°C (32°F to 104°F)	0°C to 40°C (32°F to 104°F)	0°C to 40°C (32°F to 104°F)
Storage Temperature	-40°C to 60°C (-40°F to 140°F)	-40°C to 60°C (-40°F to 140°F)	-40°C to 60°C (-40°F to 140°F)	-20°C to 60°C (-4°F to 140°F)
Humidity	5% to 95% relative humidity, non-condensing	5% to 95% relative humidity, non-condensing	5% to 95% relative humidity, non-condensing	5% to 95% relative humidity, non-condensing
Light Levels	Up to 4842 Lux (450 footcandles)	Up to 4842 Lux (450 footcandles)	Up to 4842 Lux (450 footcandles)	Up to 4842 Lux (450 footcandles)
Shock	Normal operation after 30 drops to concrete of 1.5 m (5')	Normal operation after 30 drops to concrete of 1.5 m (5')	Normal operation after 30 drops to concrete of 1.5 m (5')	Normal operation after 30 drops to concrete of 1.5 m (5')
contaminant's	Sealed to resist airborne particulate contaminant's	Sealed to resist airborne particulate contaminant's	Sealed to resist airborne particulate contaminant's	Sealed to resist airborne particulate contaminant's